



IL-13Rα2 Polyclonal Antibody

Catalog No	YP-Ab-13749
Isotype	IgG
Reactivity	Human;Rat;Mouse;
Applications	WB;IHC;IF;ELISA
Gene Name	IL13RA2
Protein Name	Interleukin-13 receptor subunit alpha-2
Immunogen	Synthesized peptide derived from Interleukin-13 receptor subunit alpha-2 at AA range: 241-290
Specificity	IL-13Rα2 Polyclonal Antibody detects endogenous levels of IL-13Rα2 protein.
Formulation	Liquid in PBS containing 50% glycerol, 0.5% BSA and 0.02% sodium azide.
Source	Polyclonal, Rabbit,IgG
Purification	The antibody was affinity-purified from rabbit antiserum by affinity-chromatography using epitope-specific immunogen.
Dilution	WB: 1/500 - 1/2000. IHC-p: 1:100-1:300. ELISA: 1/10000.. IF 1:50-200
Concentration	1 mg/ml
Purity	≥90%
Storage Stability	-20°C/1 year
Synonyms	IL13RA2; IL13R; Interleukin-13 receptor subunit alpha-2; IL-13 receptor subunit alpha-2; IL-13R subunit alpha-2; IL-13R-alpha-2; IL-13RA2; Interleukin-13-binding protein; CD213a2
Observed Band	44kD
Cell Pathway	Membrane; Single-pass type I membrane protein.
Tissue Specificity	Brain,Lung,Prostate,Renal cell carcinoma,Testis,
Function	domain:The box 1 motif is required for JAK interaction and/or activation.,domain:The WSXWS motif appears to be necessary for proper protein folding and thereby efficient intracellular transport and cell-surface receptor binding.,function:Binds as a monomer with high affinity to interleukin 13 (IL13), but not to IL4.,similarity:Belongs to the type I cytokine receptor family. Type 5 subfamily.,similarity:Contains 1 fibronectin type-III domain.,
Background	The protein encoded by this gene is closely related to IL13RA1, a subunit of the interleukin 13 receptor complex. This protein binds IL13 with high affinity, but lacks cytoplasmic domain, and does not appear to function as a signal mediator. It is reported to play a role in the internalization of IL13. [provided by RefSeq, Jul 2008],



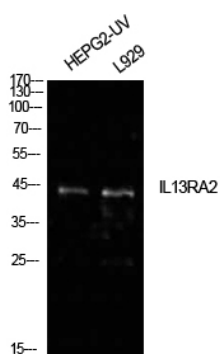
matters needing attention

Avoid repeated freezing and thawing!

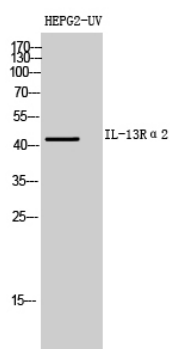
Usage suggestions

This product can be used in immunological reaction related experiments. For more information, please consult technical personnel.

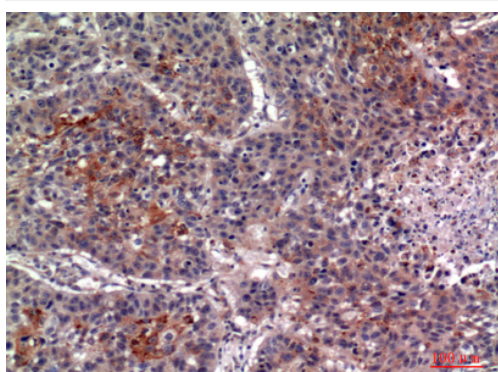
Products Images



Western Blot analysis of HepG2(UV), L929 cells using IL-13R α 2 Polyclonal Antibody. Antibody was diluted at 1:500. Secondary antibody(catalog#:RS0002) was diluted at 1:20000



Western Blot analysis of HEPG2-UV cells using IL-13R α 2 Polyclonal Antibody diluted at 1:500. Secondary antibody(catalog#:RS0002) was diluted at 1:20000



Immunohistochemical analysis of paraffin-embedded human-lung, antibody was diluted at 1:100